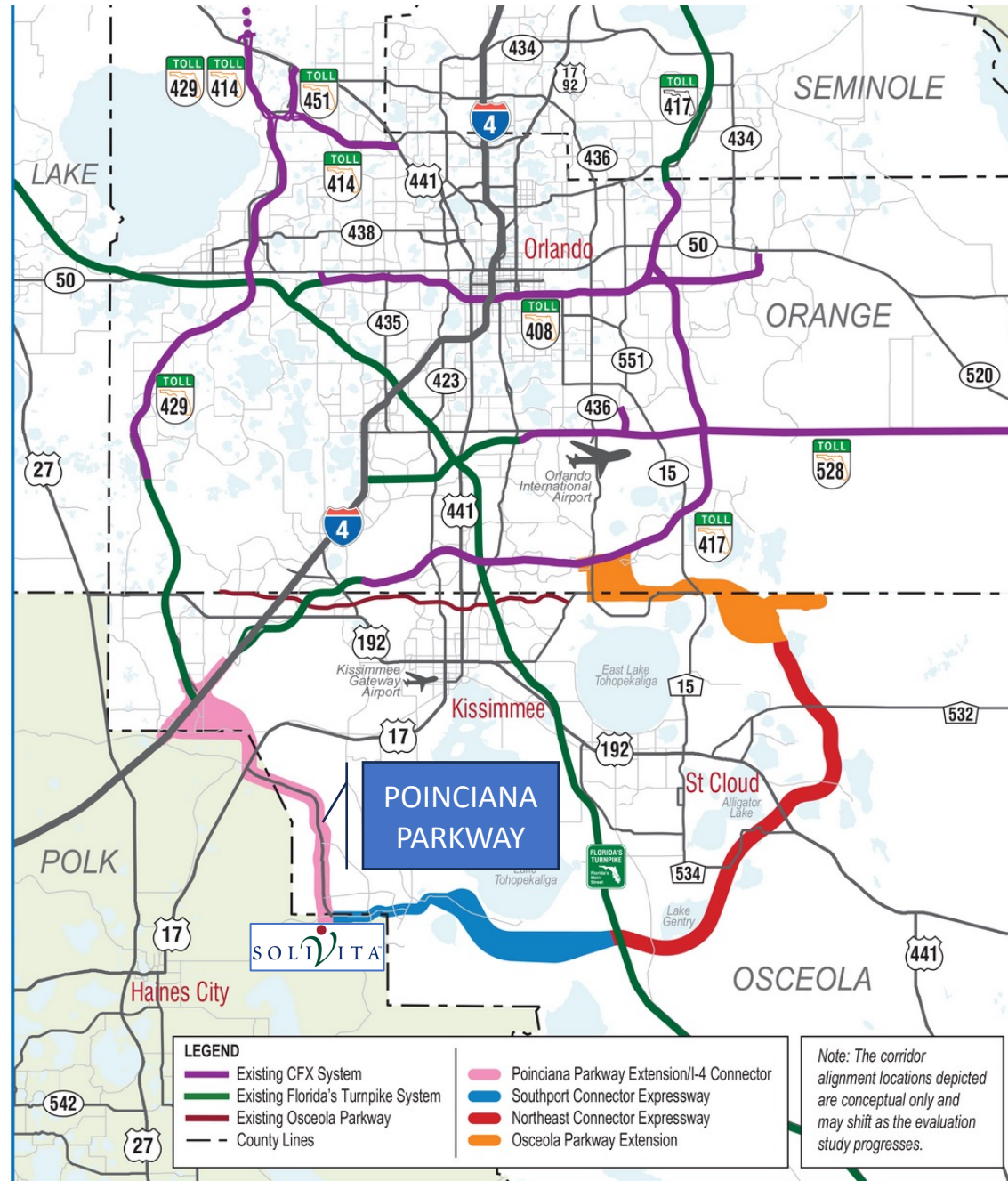


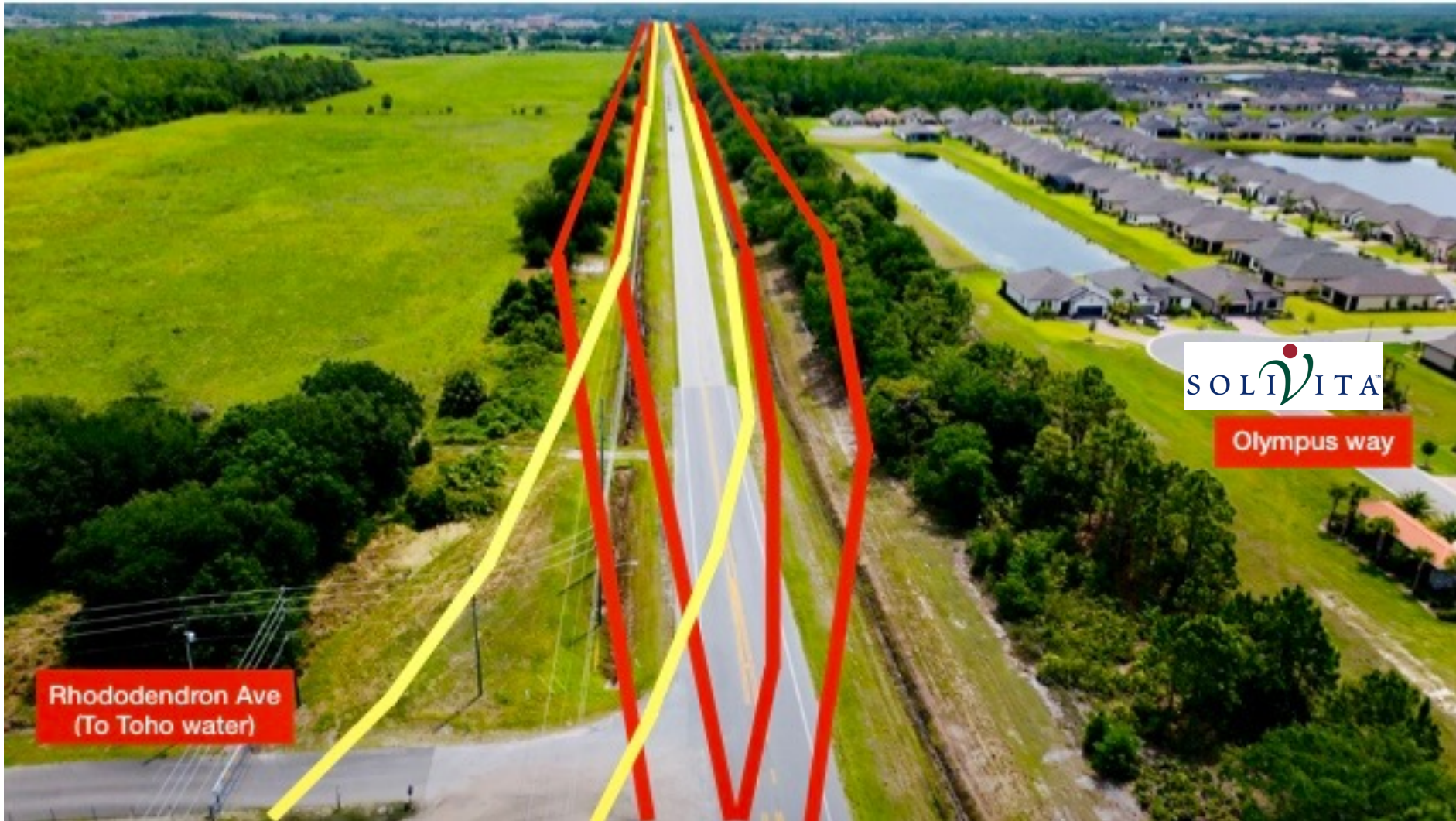
# CFX Concept, Feasibility & Mobility Studies General Location Map



NORTH



# Southport Connector Turn onto Cypress



EAST





# Southport Connector West of Marigold



EAST





# Southport Connector Through Poinciana

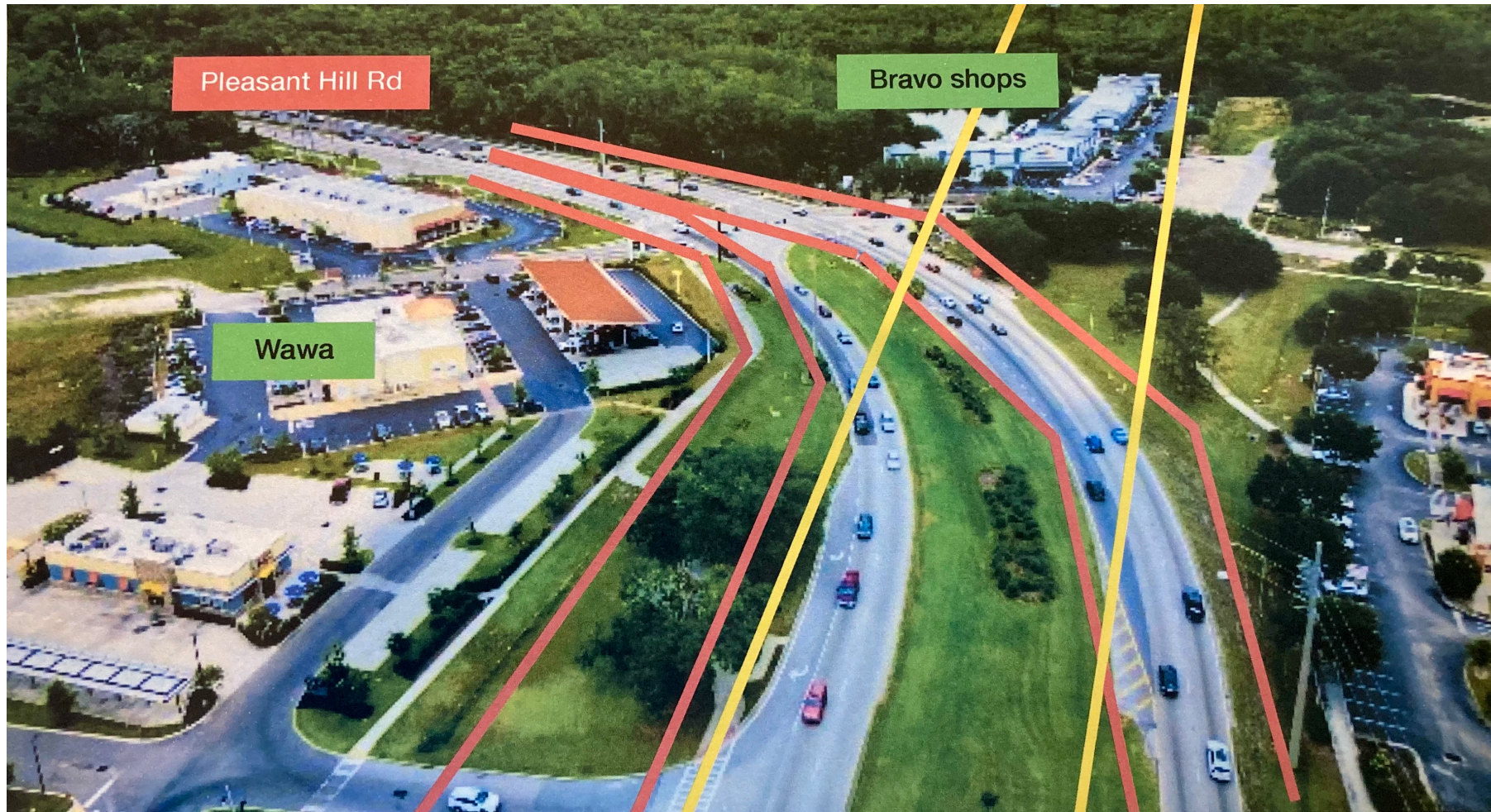


Red lines show approximate new location of Cypress Parkway, east and west lanes.

Yellow lines show approximate location of CFX-proposed raised new Southport Extension.



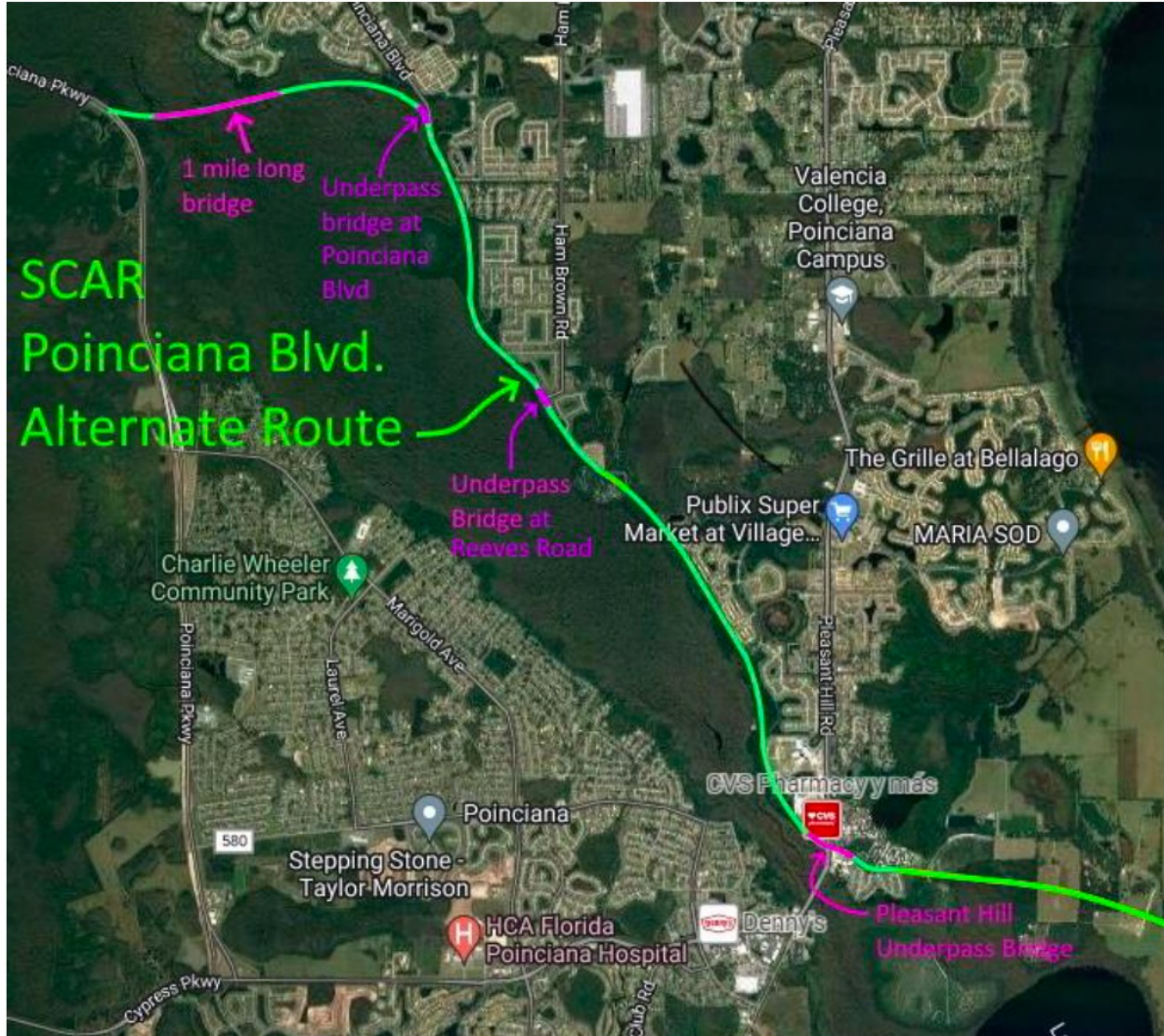
# Southport Connector Through Bravo



Bravo Shopping Center will be demolished to make way for the new CFX-proposed Southport Connector and possible junction (to the Florida Turnpike.)



# SCAR Northeast Alternate Route for the Southport

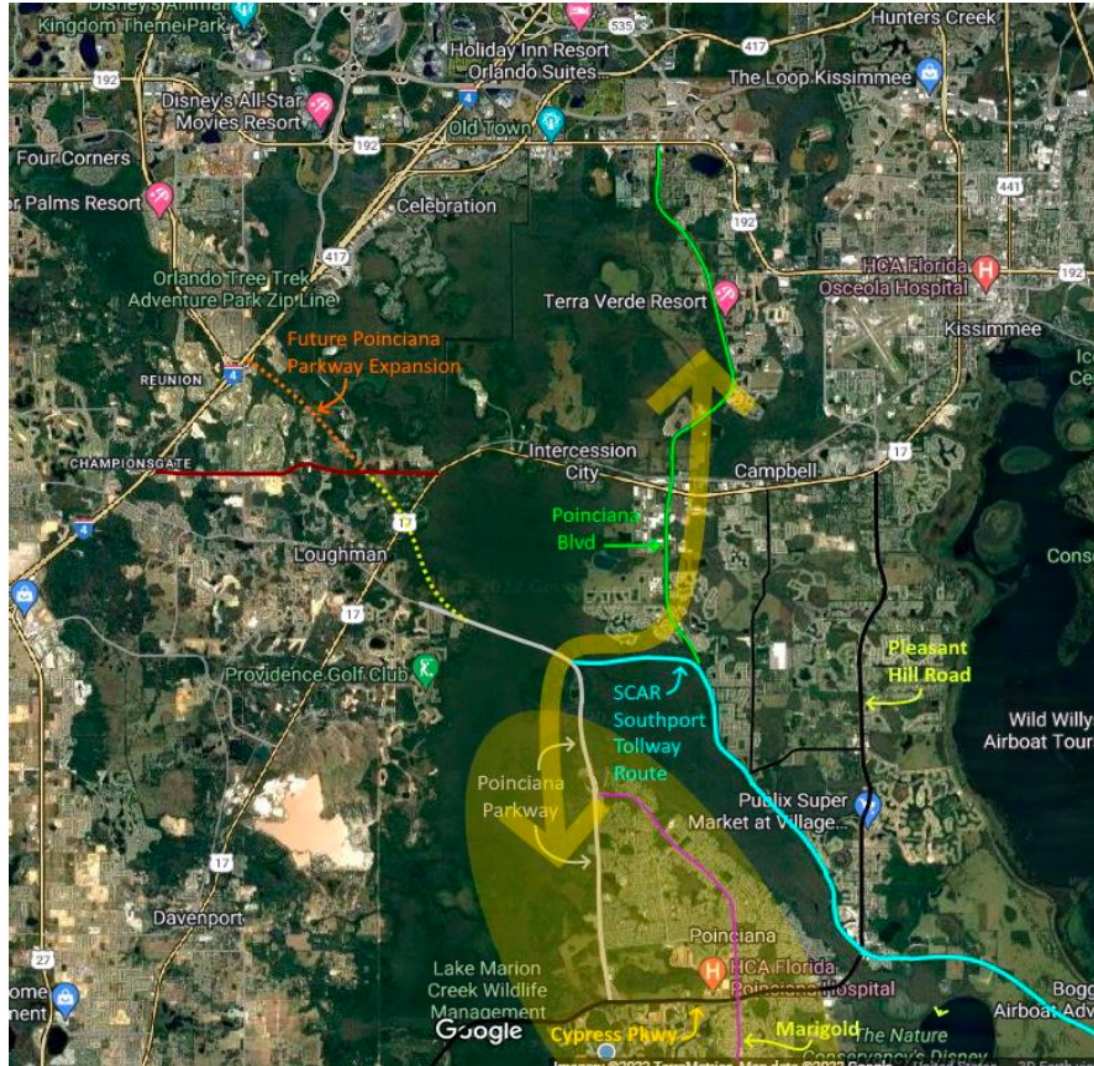


## Northeast Reedy Creek Boundary Route Alternative

- Uses Poinciana Blvd. 200 foot ROW
- 1+ mile bridge over Reedy Creek at northern end
- At ground level except for 3 tollway bridges over local intersections
- Limits access to Poinciana Blvd. from neighborhoods and High School (only right hand turns to Poinciana Blvd.)
- Doesn't divide the Poinciana town center with a 30' high walled tollway that will hurt businesses and the community
- Allows Cypress Parkway to expand to 6 lanes



# SCAR Northeast Alternate Route Traffic Benefits



## Much Faster Access To Poinciana Blvd.

- Access to Poinciana Blvd is currently difficult for all villages of Poinciana
- The Northeast SCAR route provides fast access to Poinciana Blvd. from Poinciana Parkway
- Avoids traveling through Downtown Poinciana
- Reduces traffic on Cypress Parkway in Downtown Poinciana
- Reduces traffic on Poinciana Blvd. between Pleasant Hill and the Southport tollway interchange
- The CFX planned route will not be as fast to access northern Poinciana Blvd.